

# RYE HISTORICAL SOCIETY AND TOWN MUSEUM



[Click Here to Visit our Website](#)

Come see what's new!

Summer Museum Hours  
Saturdays 10-12

Always open by request

During the first four months of this year when the museum had no set hours, 100 people visited because they made an appointment by telephone or e-mail. On most occasions we can accommodate any time request.



*St. Andrews, Rye, New Hampshire - 1910*

Join us for a  
Guided  
Historical Tour  
of  
St. Andrew's-  
by-the-Sea

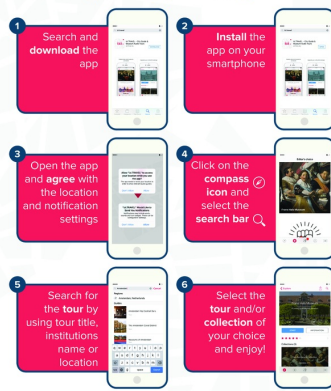
June 3, 3 pm  
30 Church Road  
Rye Beach

*Junior Warden Greg Kann will present the history of  
this iconic Rye landmark  
Free and open to the public*



## How to **install** the audio guide?

A step-by-step instruction on how to download the izi.TRAVEL app and enjoy our audio guide



# Download the Rye Beach History Walking Tour App

The free Rye Beach neighborhood walking tour app, developed through the Rye Historical Society, is now available, easy to download and a great way to entertain your household guests. Send them off for a historic stroll, stories of the early leisure market and grab yourself some idle moments.

\*Download [IZI.TRAVEL](#) onto your smart device (or your lap top for arm chair travel) from the App Store. Type Rye into the search bar and open Rye Beach Block.

One can either listen to the narration which starts up at each stop in the tour, or manage it manually by reading the tour as stops are approached. And- you'll enjoy photos of "then and now" for each house stop.

Rye Beach Block includes 24 stops, encompassing Sea, South, Central Roads and Red Mill Lane. Choose any of the stops in which to begin/end. Enjoy a delightful step back in time for an hour or two.

---

*Music-by-the-Sea*

**St. Andrew's Historic Chapel**  
30 Church Road, Rye Beach

**Sunday June 24th ~ 3pm**  
*Mozart and More*  
Portsmouth Symphony Orchestra's  
Chamber Music Performers

**Sunday July 29th ~ 3pm**  
*Songs to Make You Smile*  
Portsmouth Pro Musica's Overtones

*All are welcome!*

Suggested donation \$10.  
Proceeds benefit the Piscataqua  
Maritime Commission's Sea  
Challenge and Safe Harbor  
Recovery Center.

Refreshments will be served on the  
lawn. Seating and parking is limited.

Presented by  
**St. Andrew's-by-the-Sea**  
An Episcopal Summer Chapel  
[www.standrews-by-the-sea.org](http://www.standrews-by-the-sea.org)

## Bring Back All Day 4th of July Celebration



One of the legacy proposals of the RHS Odiorne 1623 committee is to bring back the 4th of July all day town celebration which was an annual event in the 1970's and early 80's.

There was a huge parade to the town green followed by speeches, all day activities in Parsons and the RJH fields, school and other exhibits, demonstrations, sales, Rye non profits highly visible, bike races, Fireman's field Day, art show, public lunch and supper and much more. If we did it then we can do it again! Rye deserves such an annual happening that brings the town to together to celebrate. We can begin by scheduling some events for the upcoming 4th. If interesting in helping, contact the Odiorne 1623 committee through RHS.

**The Rye History  
Trolley Tour**



**July 4th**  
**Independence Day**  
**10:30am**  
**Rye Library**  
**Parking Lot**

Our trolley tour is an intriguing look at various historical locations in Rye. Hear Rye stories and explore our rich history from the comfort of a trolley, then disembark at locations for an up close look and more historical anecdotes and facts.

Registration is required and seating is limited!  
The tour leaves from the Rye Public Library Parking Lot  
plan to arrive by 10:15 AM  
**\$20 per person \$18 for over 65 and under 18**

Reservations by e-mail only: [info@ryenhhistoricalsociety.org](mailto:info@ryenhhistoricalsociety.org)  
Give name, # in party and telephone contact number



*"Rye Rocks! - Bedrock Geology of Rye, NH and the Surrounding Area".*

Monday July, 9 at 6:30 PM at the Rye Public Library

The presenter is Michael Quinn, a Rye resident and geologist (B.S., Univ of NH; M.S. Univ of TN; Ph.D., Rice Univ.). In this presentation, Dr. Quinn will describe how our local geology fits into the broader geologic history of the Appalachian Mountains. Come learn about the Portsmouth Fault, Rye Formation, Breakfast Hill Granite, Triassic basalt intrusions, and more!

RHS will exhibit photos of coastal rocks to support the power point presentation. Sponsored by the Rye Historical Society and the Rye Public Library. This program is the first of a series of talks of the Odiorne 1623 project culminating in 2023, the 400th anniversary of the first permanent European settlement in New Hampshire at Rendezvous (Odiorne) Point .



## SAVE THE DATE!

Members are Invited to the Annual Meeting and Celebration

Sunday, July 15th 3pm  
St. Andrew's-by-the-Sea Garden

At our annual meeting you'll be able to hear about upcoming plans for exhibits and programs, and find out ways you can become more involved if you are so inclined. Learn more about the chapel in a special presentation. Enjoy food, drink and camaraderie!

**Not a member? There is still time to join!**

Sign up [HERE](#) or contact us to join by cash or check  
[info@ryenhistoricalsociety.org](mailto:info@ryenhistoricalsociety.org)

## Volunteer Administrative Help Needed

Are you organized and computer literate, looking for a meaningful way to give back to your community? Do you have a few hours available each week or two that you could devote to the RHS? Then WE NEED YOU!

The RHS is currently seeking administrative help with emails, donations and general office work. Any hourly commitment would be greatly appreciated. A bonus: you will receive a membership to the RHS after 6 hours of volunteer work.

If interested please email [info@ryenhistoricalsociety.org](mailto:info@ryenhistoricalsociety.org)

## Is Your House Special? Tell Us Why!

Be a part of an exciting program at RHS - the Rye "House of the Month". Each month a different house or road will be **featured on our newsletter as well as in Rye Magazine.**

Is your house or road historic and of special interest to the

## Share The History of Your Home with a Historic House Plaque

Many Rye homes, business and public buildings are adorned with these handsome plaques. The cost of a plaque is \$85.

If you would like one for your home to add to the heritage of the town,



community?

If so, please contact us to enter this month's competition. Don't know much about your house but you know it's significant? **We can help you do the research!**

**Email us TODAY at  
info@ryenhhistoricalsociety.org**

house plaque applications may be picked up at the Rye library on the coffee table (behind the RHS brochures).

Check and application may be mailed to PO Box 583, Rye, NH 03870 or left in our mailbox by the front door of the museum.



### Summer Hours in Effect for May - October

The Rye Historical Society's Museum is open Saturdays 10-12

Always by request - please call for an appointment 603-997-6742 or email us at  
info@ryenhhistoricalsociety.org

Rye Historical Society | 603-997-6742 | info@ryenhhistoricalsociety.org

10 Olde Parish Road, Rye, NH 03870

[Click here to be added to our email list](#)

